

With "Aerokinetic" Principle
Double acting-double orifice air valve PN 16
Inlet flange to ISO 7005-2 (EN 1092-2: 1997, DIN 2501)

Use:

For water (not sewage) and neutral liquids to max. 90°C
 Working pressure: min. 0.1 bar
 max. 16 bar

Tests:

Hydraulic test: 1.5 x PN

Options:

Isolating; Gate valve
 Butterfly valve

Approvals:

BS specifications
 Malaysian specifications

Materials:

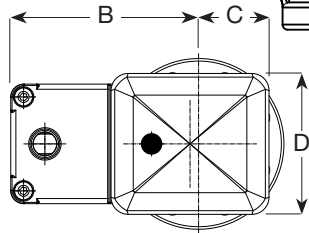
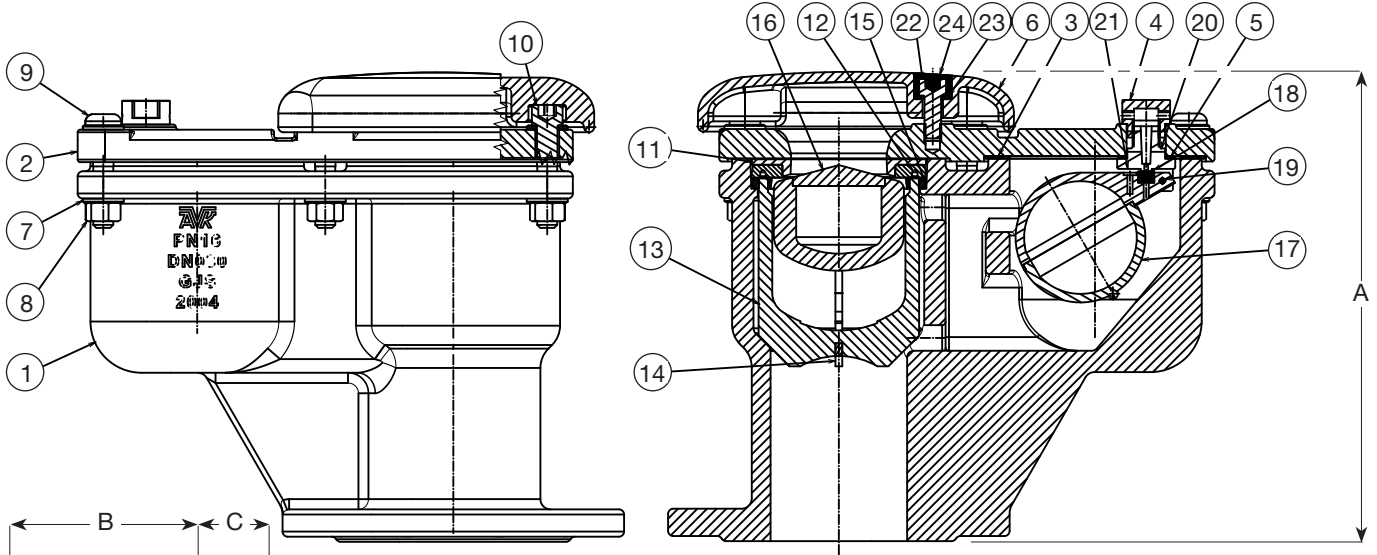
Body, bonnet, cowl	Ductile iron GGG-50 to DIN 1693 (BS 2789 Grade 500-7)
Coating	Electrostatically applied epoxy resin internally and externally to DIN 30677 (WIS 4-52-01) 250µ
Gasket, seal ring, sealing face	EPDM rubber to BS 2494 type W
Orifice cover, orifice bracket	Nylon, injection moldings of glass filled A190 Nilon
Washer, nut, bottom head cap screw, socket head cap screw, pin, washer, pan head machine screw	Stainless steel 304 to BS 970
Seat ring, guide top, guide bottom, guide ring, large orifice, small orifice	ABS (acrylonitrile butadiene styrene) is a polymer of very high impact strength
Plug	Plastic



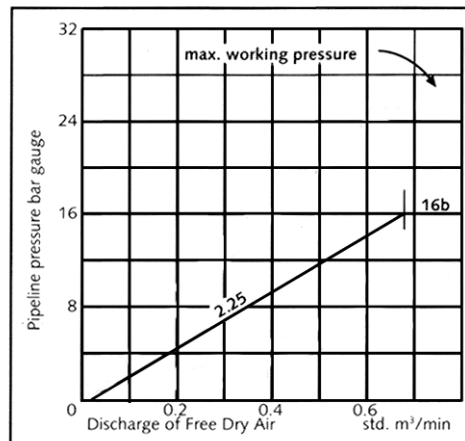
With "Aerokinetic" Principle
Double acting-double orifice air valve PN 16
Inlet flange to ISO 7005-2 (EN 1092-2: 1997, DIN 2501)

Component list:

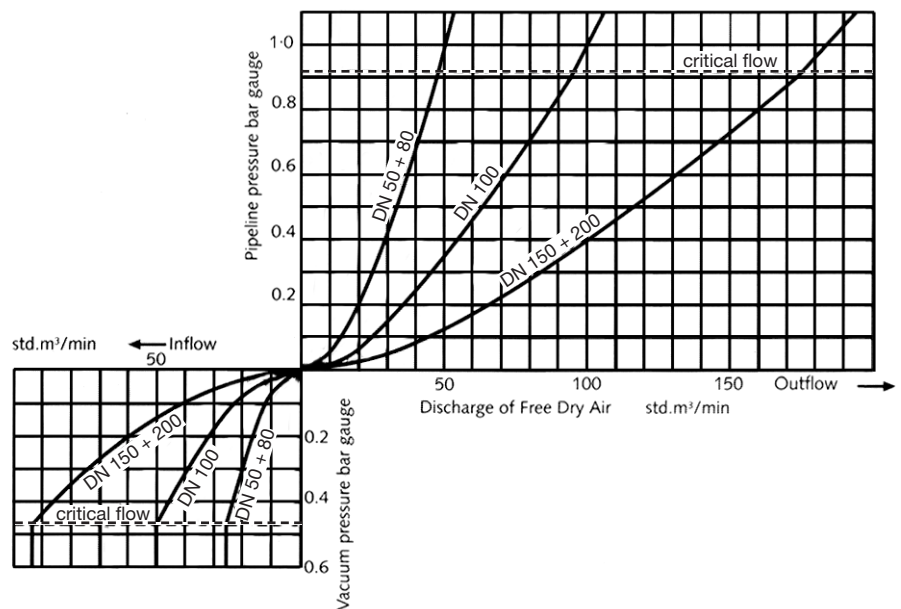
- | | | | |
|------------------|---------------------------|-------------------|----------------------------|
| 1. Body | 7. Washer | 13. Guide top | 19. Pin |
| 2. Bonnet | 8. Nut | 14. Guide bottom | 20. Orifice bracket |
| 3. Gasket | 9. Bottom head cap screw | 15. Guide ring | 21. Pan head machine screw |
| 4. Orifice cover | 10. Socket head cap screw | 16. Large orifice | 22. Socket head cap screw |
| 5. Gasket | 11. Seat ring | 17. Small orifice | 23. Washer |
| 6. Cowl | 12. Seal ring | 18. Sealing face | 24. Plug |



Air discharge - Small orifice valves



Air discharge - Large orifice valves



Ref. nos.	DN	A mm	B mm	C mm	D mm	Weight kilos
851-050-40-111-000	50	275	220	83	165	24
851-080-40-111-000	80	275	220	83	165	24
851-100-40-111-000	100	280	248	98	195	30
851-150-40-111-000	150	344	284	115	230	44
851-200-40-111-000	200	344	284	115	230	44